

RE4DY

MANUFACTURING DATA NETWORKS

RE4DY TOOLKIT

Name of the Tool	IPscreener
Tool Owner	Industry Commons Foundation
Version	1.0
Date	Nov 2025
Version	V1.0

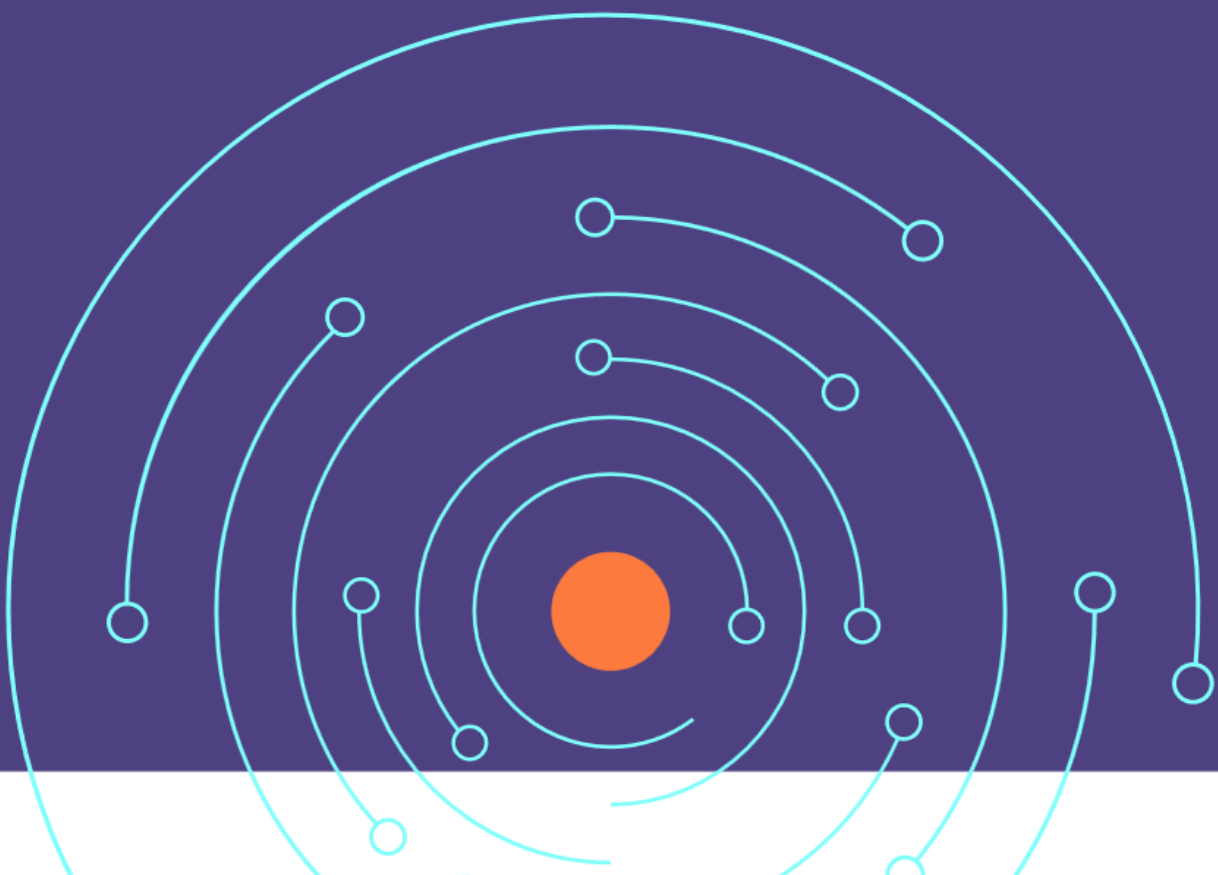


Table of contents

Table of contents	2
1. Component Description	3
2. Input.....	3
3. Output.....	3
4. Information Flow	3
5. API	4
6. Implementation Technology	4
7. Comments	4



1. Component Description

With IPscreener everyone can explore and understand the knowledge hidden in patents. From a text the AI presents an instant dashboard of the innovation landscape. Showing trends, identifying similar documents and assist reading as well as enabling online collaboration and reporting. Use IPscreener for a smarter way to validate and improve on your ideas.

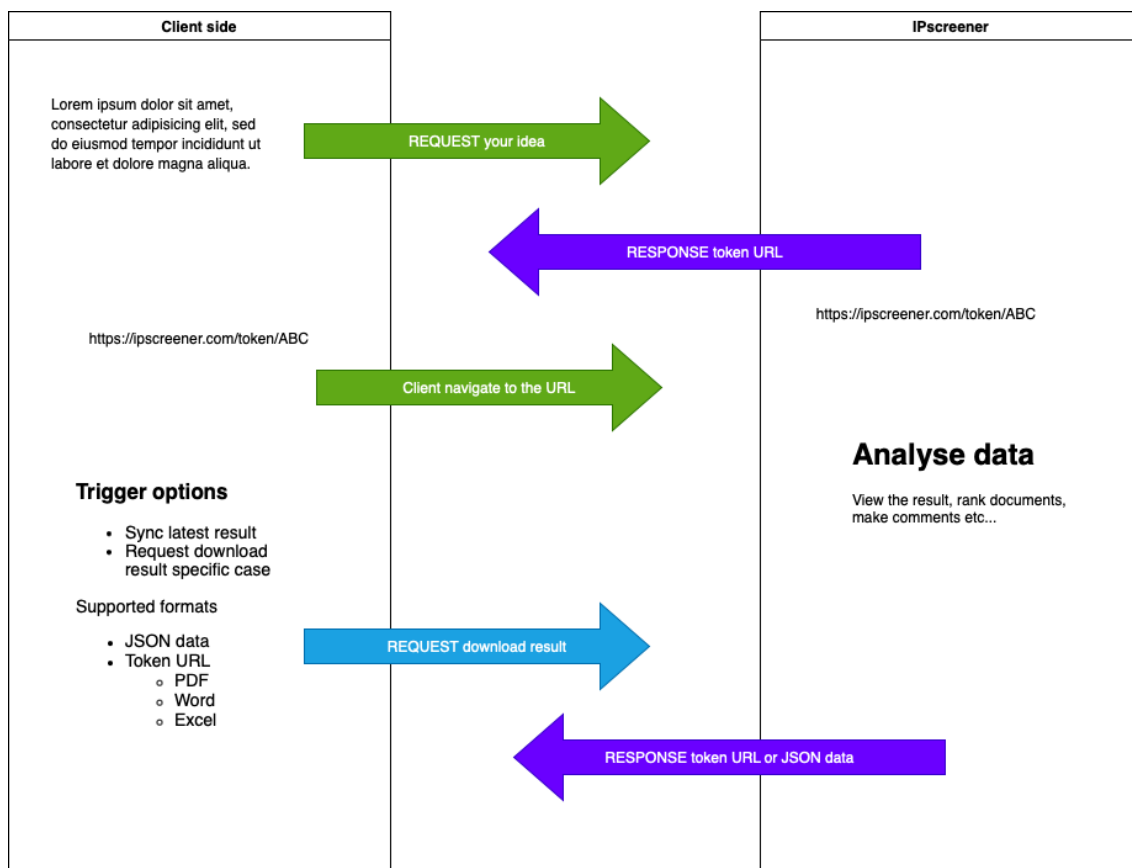
2. Input

Text or voice, we support input data in several languages.

3. Output

Resulting data based on input, including statistics, trend analysis, identified documents, comments and iterations.

4. Information Flow



5. API

We have our updated official documentation of our APIs at <https://docs.ipscreener.com/developer>

6. Implementation Technology

Our platform IPscreener are based on several Docker containers. With help of the Docker engine, we can host our infrastructure both in a cloud environment and local setup. IPscreener platform used more than 20+ different API endpoints to provide different services of need.

Besides our APIs we also use several different database engines depending on the task. Example of those are SQL-servers, Redis, Elasticsearch, Lucene/Solr.

Training of different Machine Learning supported by Python libraries/frameworks such as Tensorflow, BART, BERT and other LLM models.

7. Comments

The IPscreener platform is operating both as WEB-service and REST access point. Data points as well as GUI/UX components are accessible for integration via both options.

